



Creative Camera Club

Sizing Images in Photoshop

Open and process your image. If desired, save a full resolution version of your finished image.

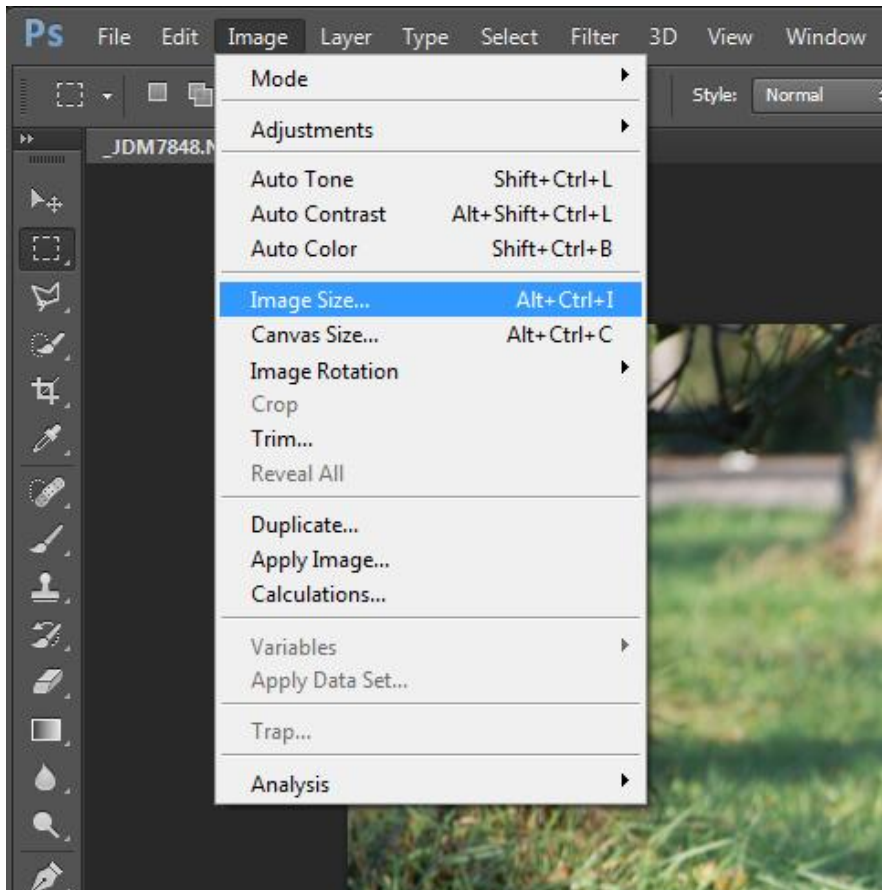
You can use either of two methods to resize the image:

Image > Image Size or

File > Automate > Fit Image.

Using Image Size

In the Image menu select Image Size to display the Image Size dialog.

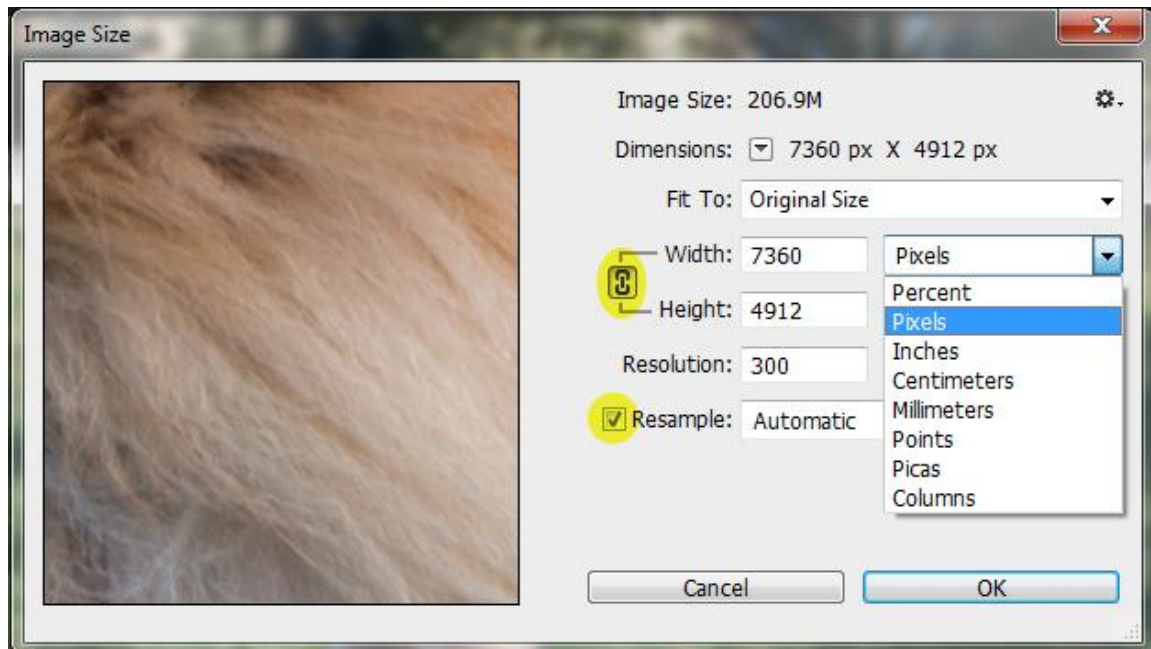


On the Image Size dialog, make sure that:

A check mark is in the box next to “Resample”

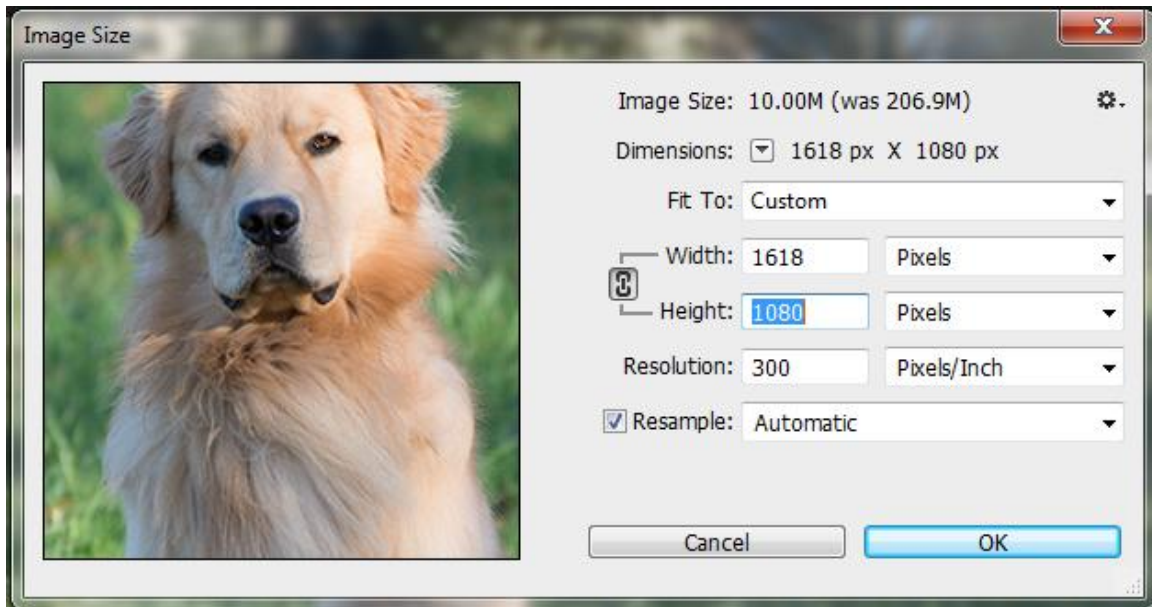
The image dimensions are in Pixels

The Width and Height ratio is locked (indicated by the gray lines linking the chain icon to Width and Height. The chain icon is a toggle, just click to turn on or off.)

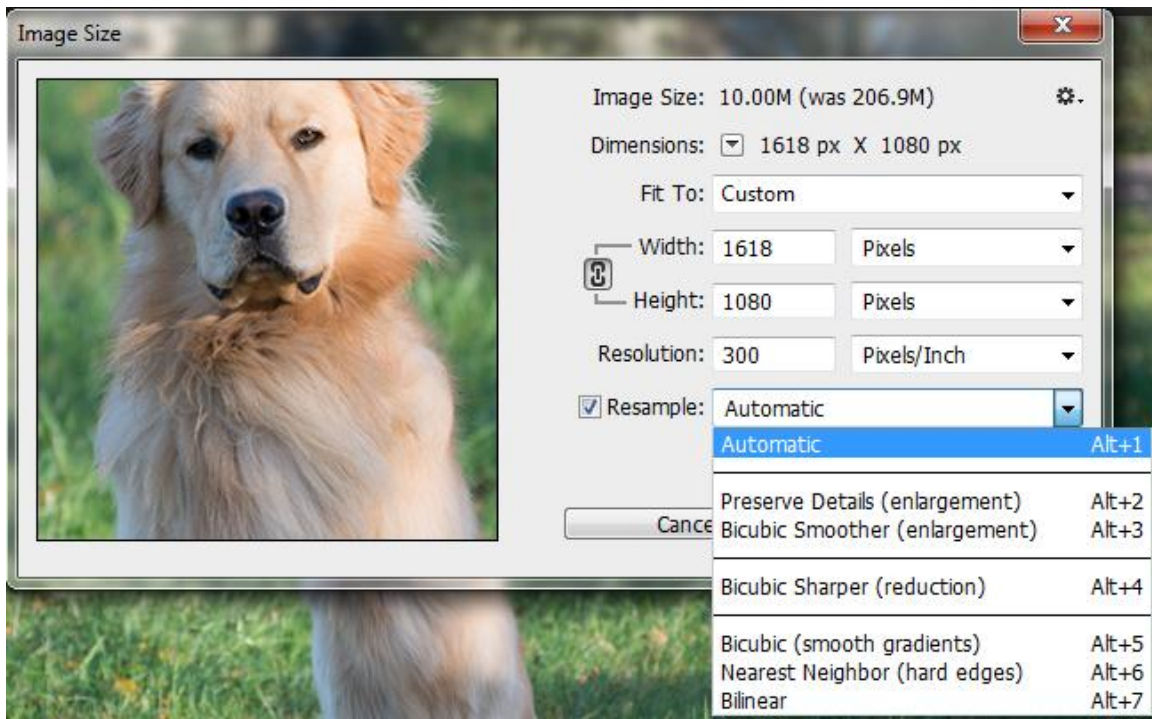


In the image size dialog, enter the controlling dimension for your image. Unless you have a wide panorama image, the controlling dimension will be height = 1080 pixels for an HD image. With the Width to Height ratio locked, Photoshop calculates and displays the other dimension (1618 in this SLR Landscape example.)

If your image is a panorama, check the calculated width. If the calculated width is greater than 1920 (the width of an HD image,) enter 1920 for the width. Photoshop will calculate a new height that is less than 1080.



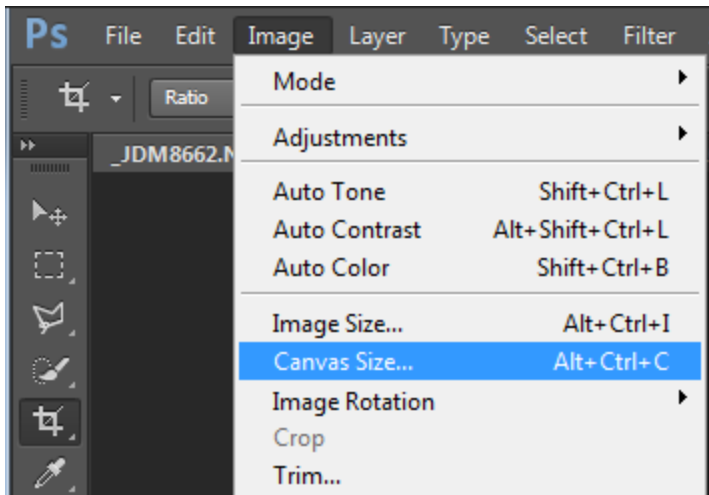
If desired, select the re-sampling algorithm to be used to perform the resize. In most cases you can leave the default, Automatic, and let Photoshop select the re-sampling algorithm. Automatic will use Bicubic Sharper when you are reducing image pixel size.



Click [OK] to complete the image resize.

Filling the HD Frame

Most of your images will not be 16 x9 HD landscape images. You may want to fill the unused portion of the HD frame with a specific background color that complements your image.

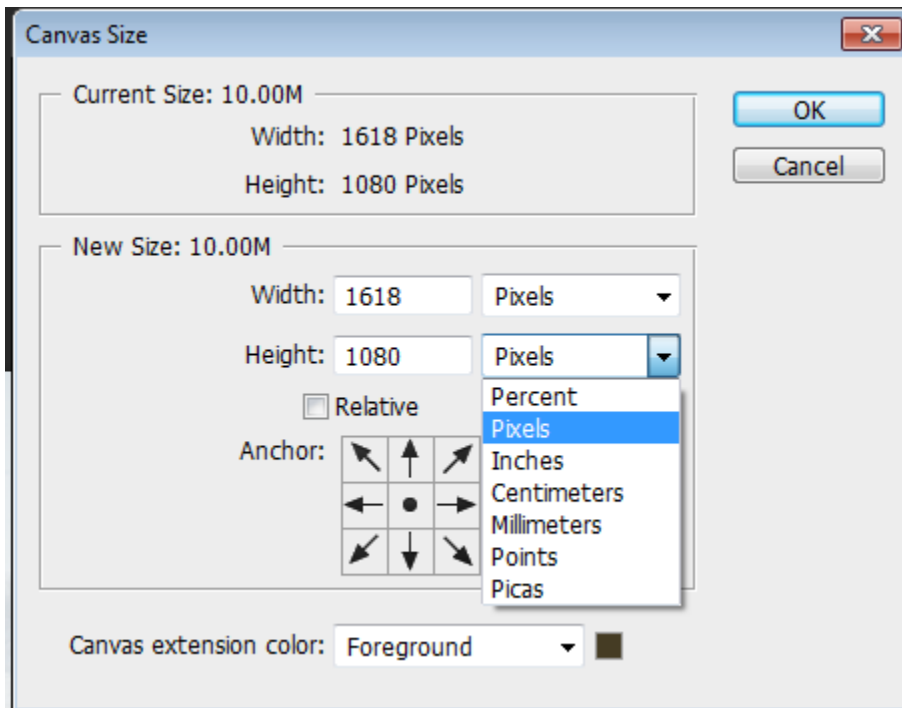


In the Image menu select Canvas Size to display the Canvas Size dialog.

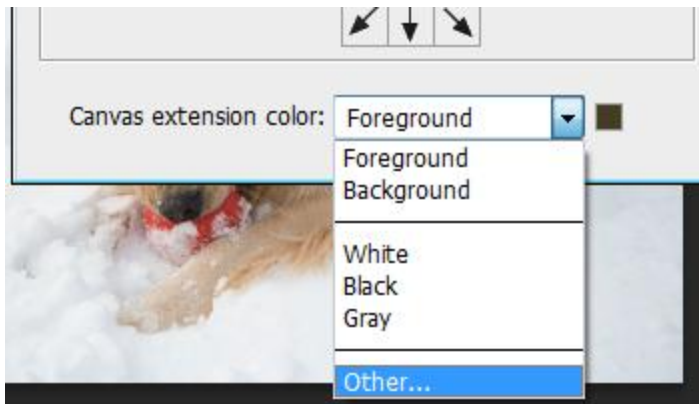
On the Canvas Size dialog, make sure that you have selected "Pixels" from the dimension dropdown.

This is a normal 3 x 2 SLR image in landscape so I will change the canvas width from 1618 to 1920 (the width of an HD image.) For a panorama

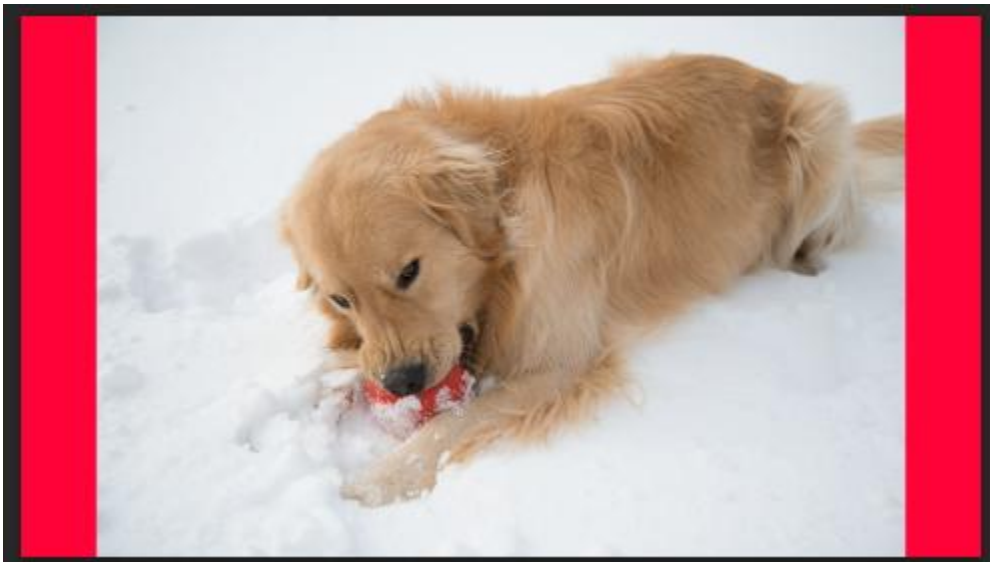
you would set the Height to 1080.



Now select the Canvas extension color using the dropdown. You can use the Foreground or Background color on the tool bar, select White, Black, or Gray from the list, click Other to use the Color Picker to select a color.

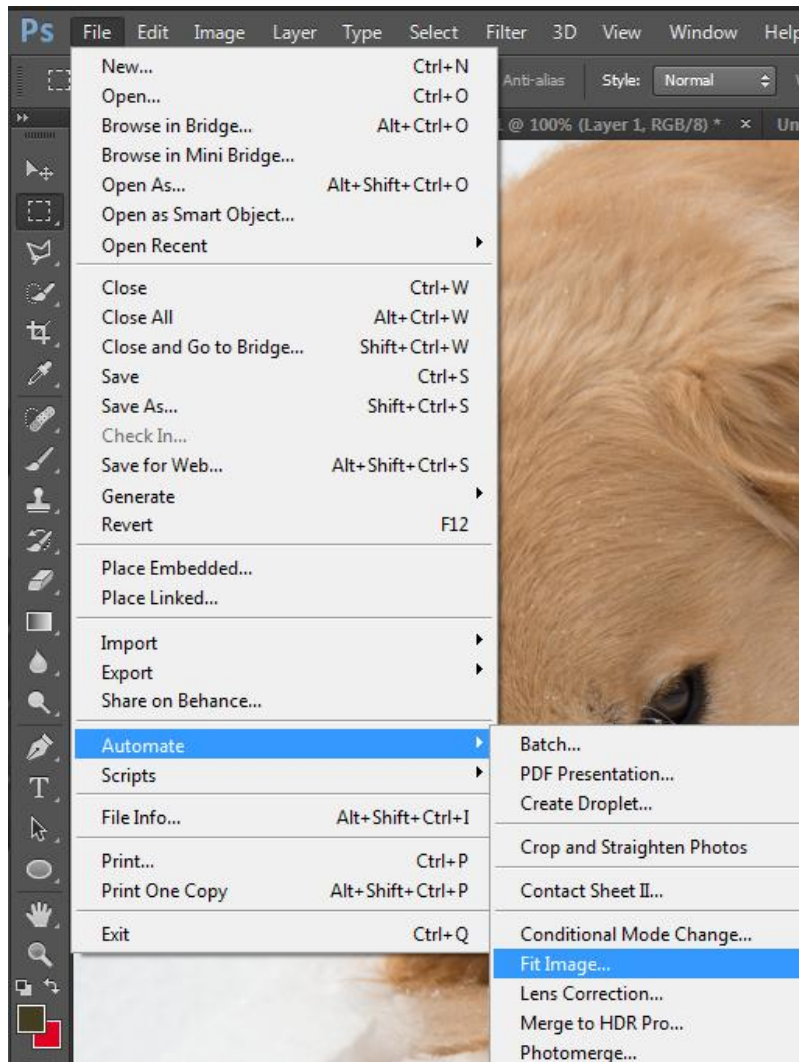


I used Other and selected a red to make the effect easy to see. The result is a letter box image with a red background. (This is not a recommended background color!)

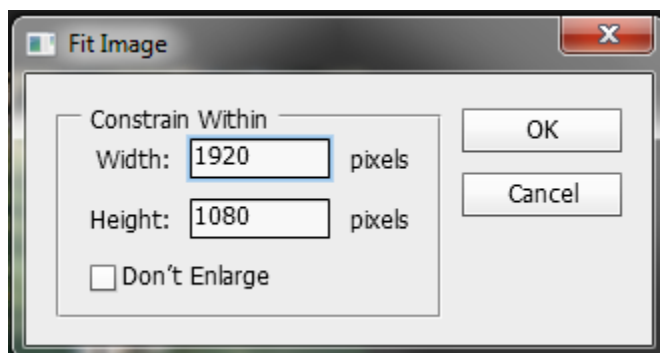


Using File > Automate > Fit Image.

Fit Image will re-size your image to fit inside the specified dimensions. Fit Image will preserve the image ratio and automatically make the image as large as possible in the Constrain Within values.



Click File > Automate > Fit Image to open the Fit Image dialog, shown below.



Specify the pixel dimensions (width = 1920 and height = 1080 for an HD image) and click the [OK] button. The image on your screen is re-sized.

Photoshop remembers the Constrain Within values so you can quickly resize a number of images. The resulting image will have either the height or width set to the constrain

value, and the other dimension will be less than its constrain value. For example, a 2 high by 3 wide SLR image will be 1080 high by 1618 wide.

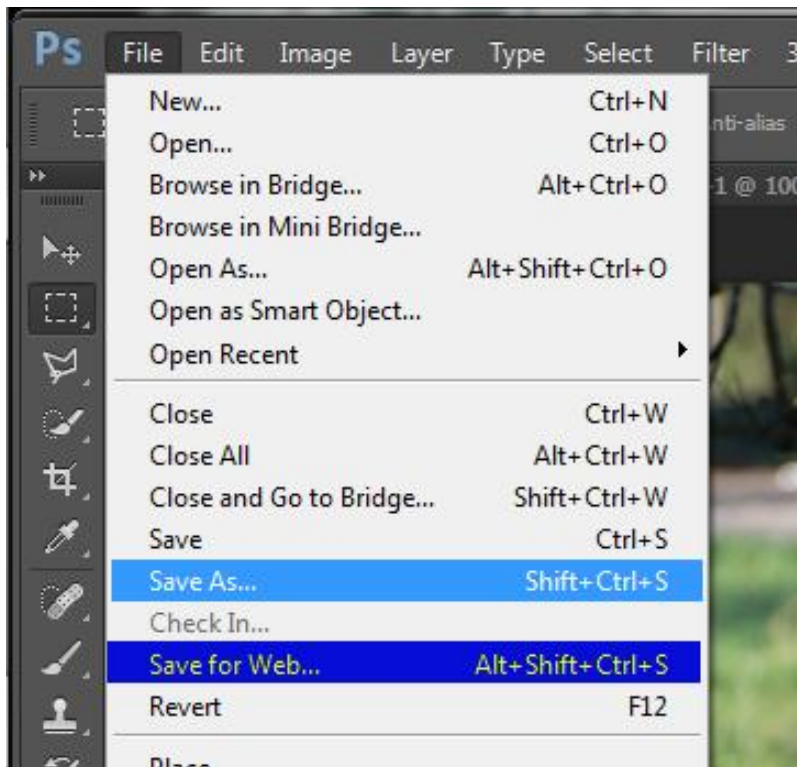
Fit Image works well for images, such as a panorama, that could lose some of its visual impact if it were cropped to exactly 1080 pixels by 1920 pixels.

Saving the Image

As shown below, you can use either of two save methods in Photoshop:

Save As...

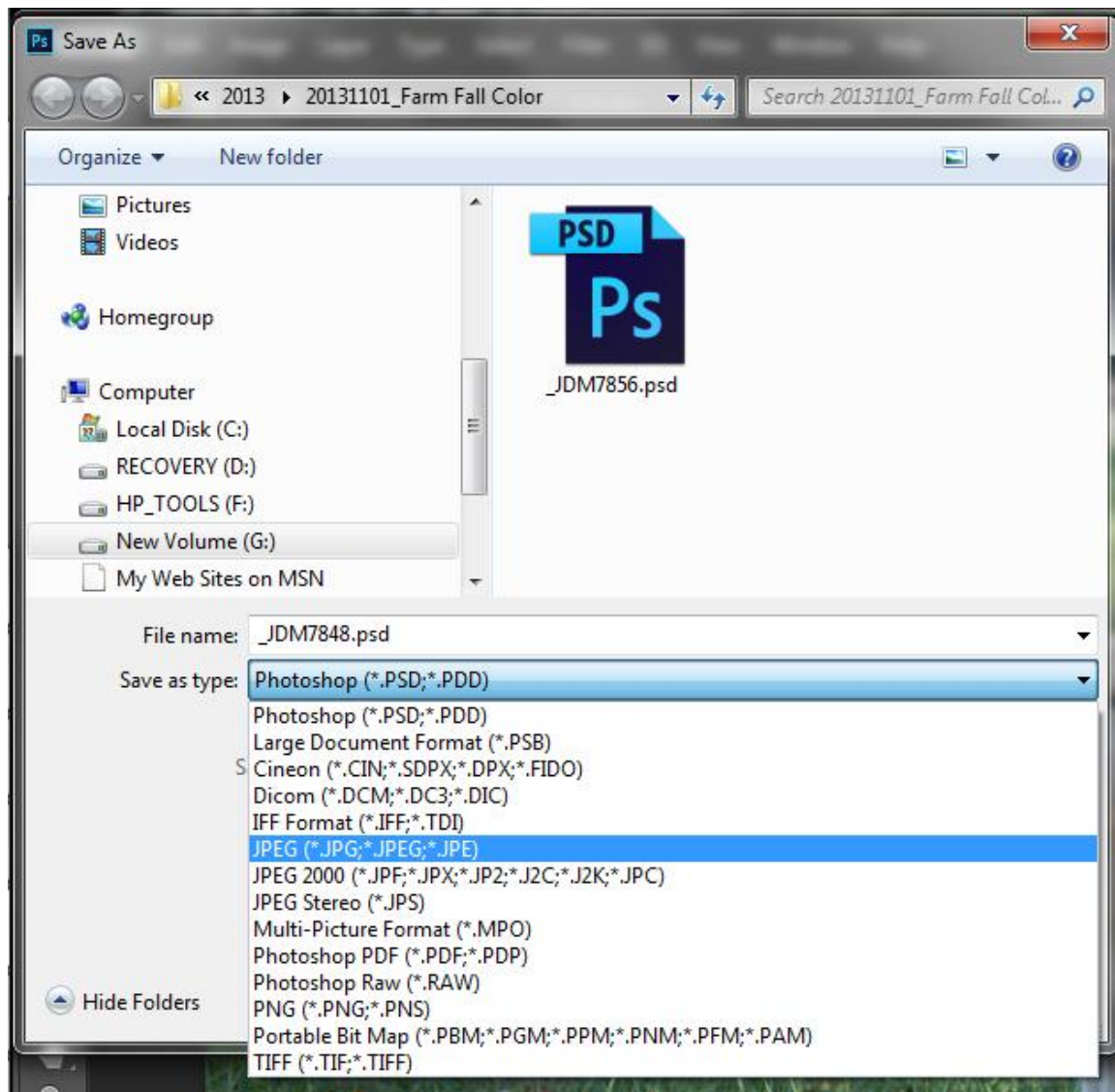
Save for Web.....



Do not use Save since it does not allow you to rename your image file or select the file type and it will overwrite the original image with the smaller one.

Using Save As

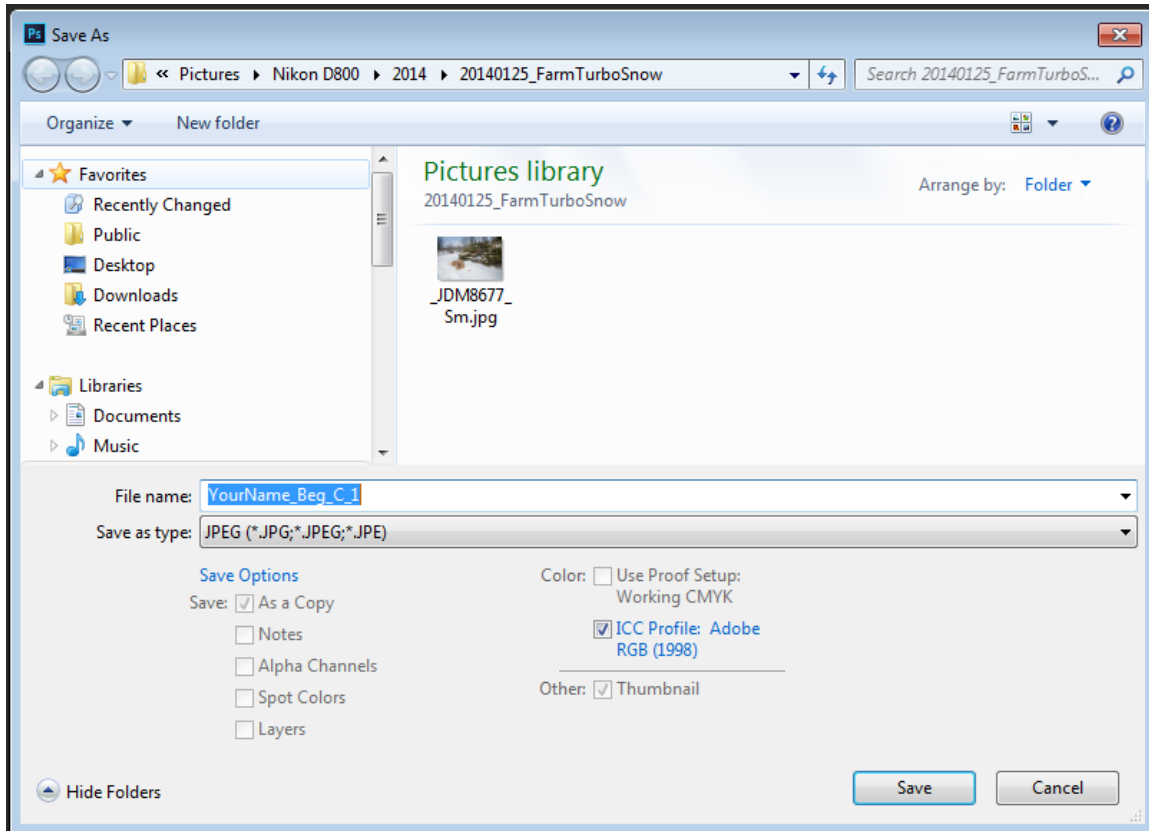
Click File > Save As or use the PC shortcut Shift+Ctrl+S to open the Save As dialog, shown below.



Use the “Save as Type” dropdown to select JPEG as the file type. Then enter the File name as shown below, using the naming convention.

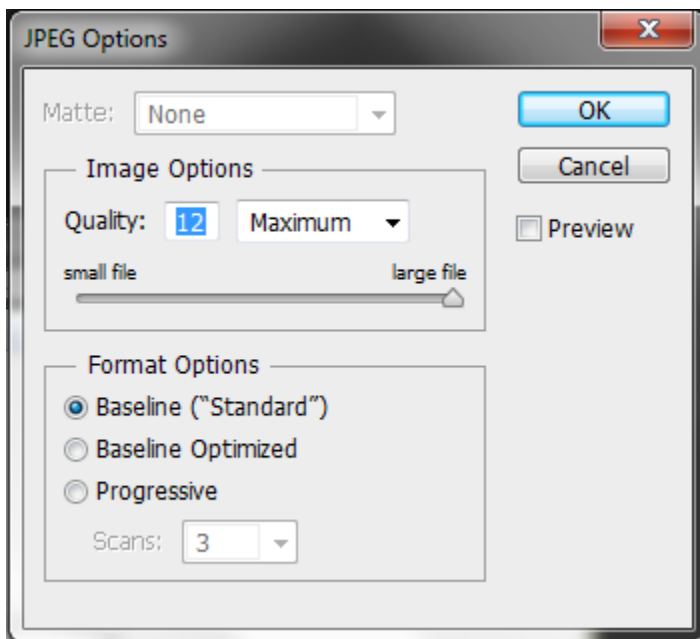
In the example below, the user entered YourName_ as the member’s name, “Beg_” for Beginner, “C_” for Color, and 1 for image number 1.

YourName_Beg_C_1.jpg.



If you are using a different directory to save club submissions, use the navigation function at the top of the dialog to navigate to the desired directory.

Click the [Save] button to see the JPEG options dialog shown below.



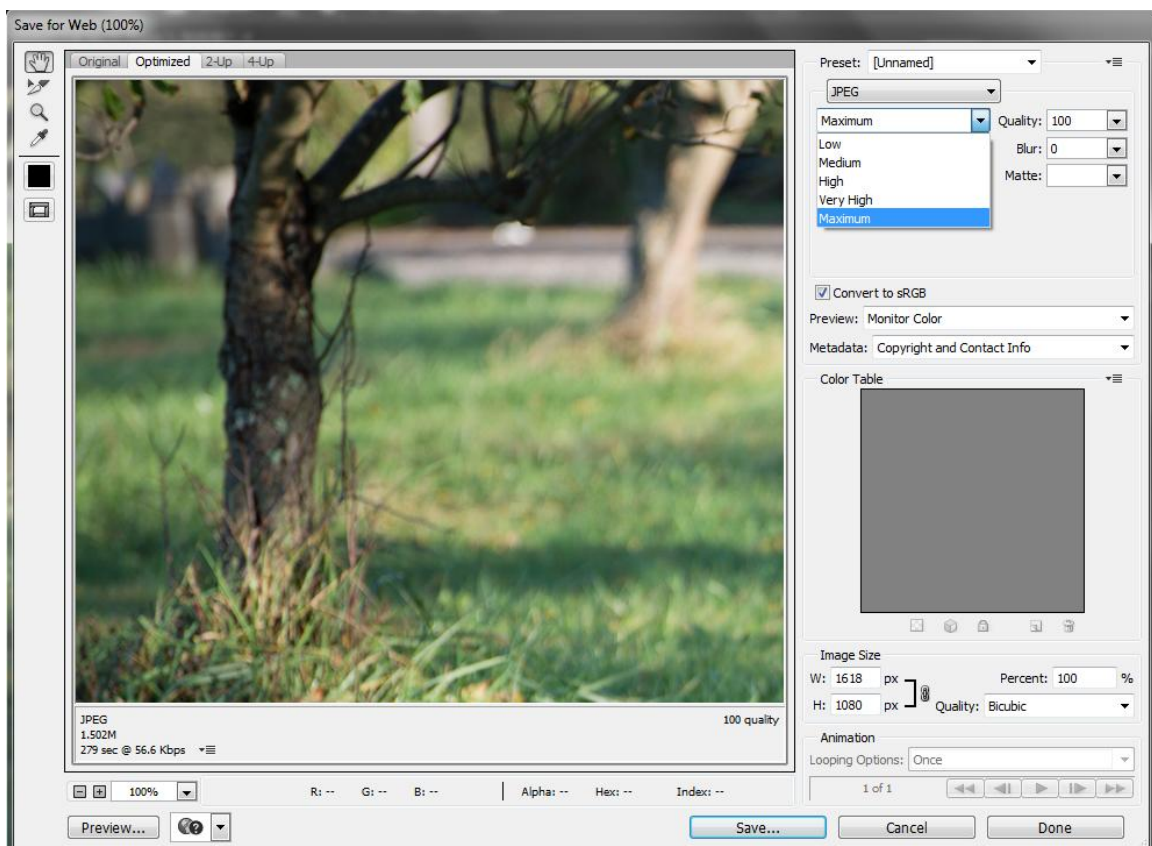
Set the quality to Maximum (10 or 12) and click the [OK] button to save the image.

Using Save for Web

Save for Web converts the image to one of the image formats used on the Web.

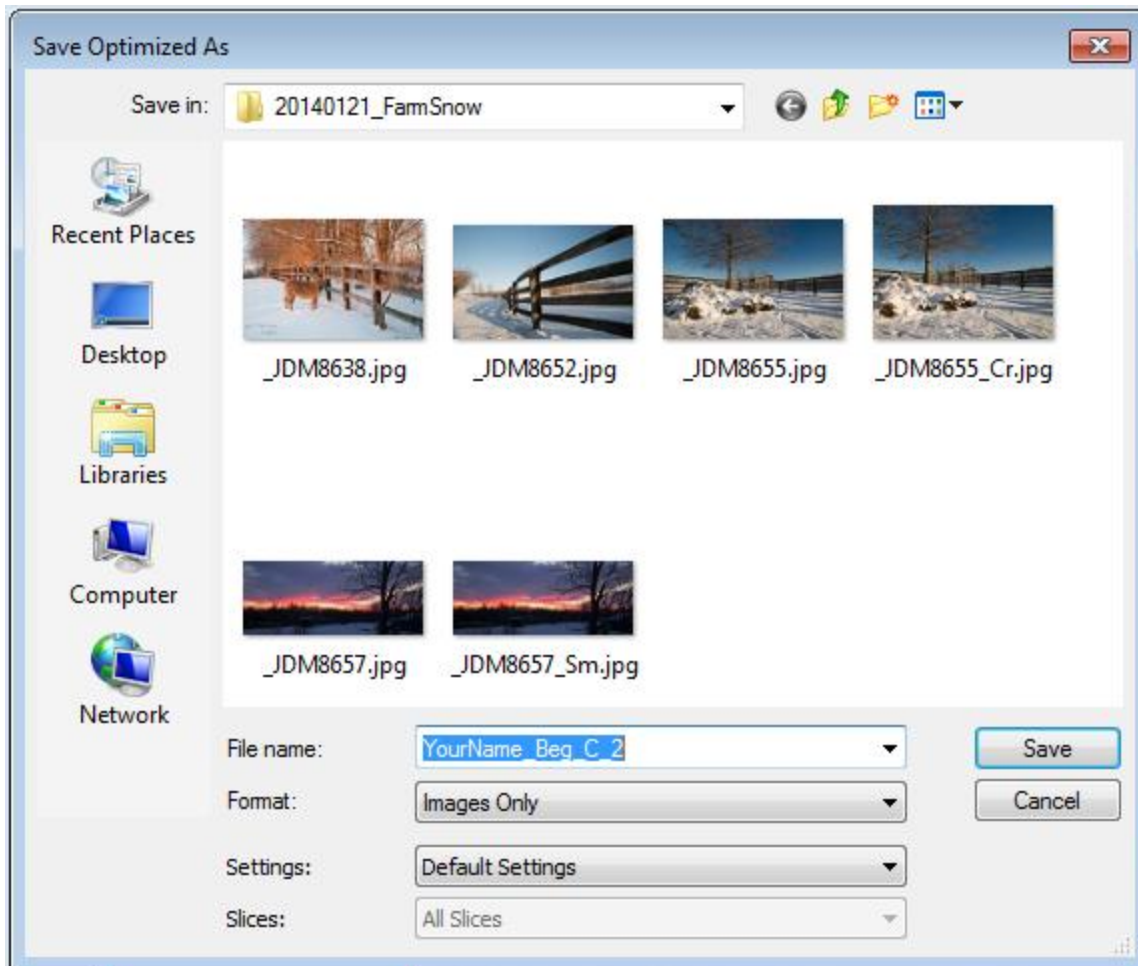
Click File > Save for Web... to open the Save for Web dialog, shown below.

As shown in the figures below, select JPEG in the second drop down and select “Maximum” quality in the third drop down. Leave everything else at default settings and click the [Save] button.



On the Save Optimized As dialog, enter the File name as shown below, using the naming convention described in File Names, above. In the example the user entered YourName_ as the member's name, “Beg” for Beginner, “C” for Color, and 1 for image number 1.

YourName_Beg_C_1.jpg.



If you are using a different directory to save club submissions, use the navigation function at the top of the dialog to navigate to the desired directory.

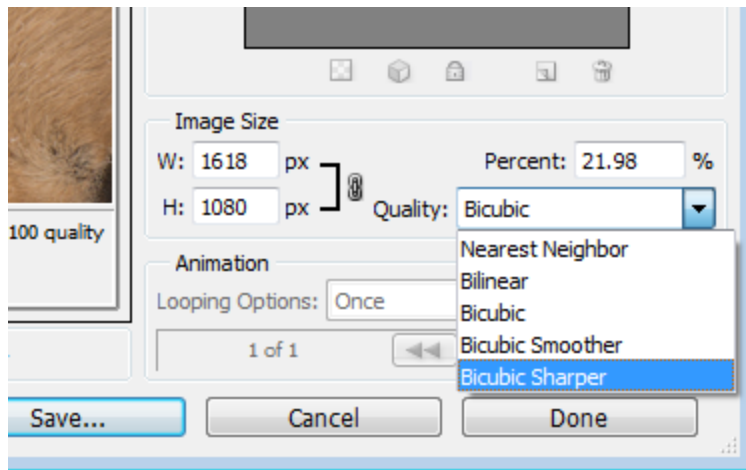
Click the [Save] button to save the image file.

Using Save for the Web to change Image Size

Save for the Web includes function to adjust image size in the lower right hand portion of the dialog. For large images this can be a slow process and Photoshop displays a warning.

Use the “Quality” dropdown to select “Bicubic Sharpen” since you are reducing the size of the image. Enter the controlling dimension, normally H = 1080, and Photoshop calculates the width. If the Width is larger than 1920, enter 1920 for the width and Photoshop will calculate the Height. In the example below the image is a 3 wide by 2 high SLR image and fits with a Height of 1080.

Be sure you do quality then dimension because if you change the dimension first Photoshop will resize the image when you select the Quality, then resize again when you click [Save], a very slow process.



Click [Save...] to resize and open the Save Optimized As dialog.

On the Save Optimized As dialog, enter the File name as shown below, using the naming convention described in File Names, above. In the example above, the user entered YourName_ as the member's name, "Beg" for Beginner, "C" for Color, and 1 for image number 1.

YourName_Beg_C_1.jpg.