



Tripods

Creative Camera Club

Jack D McKinney





What do You Shoot?

- Scenic
 - Architecture
 - Action/Sports
 - Flowers
 - Macro
 - Portrait
 - Studio
- What you shoot will impact your choice in a tripod
 - Light weight for back pack to scenic locations
 - Solid construction for studio work



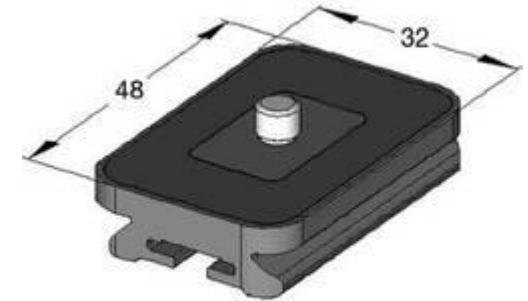
Key Factors to Consider

- Weight – Light weight for carrying in the field
- Stability – Solid construction with easily tightened adjustments
- Support Weight – Must support the total weight of your equipment
- Ball Head – Wide range of movement, Must support weight of equipment
- Flexibility – Able to point camera in any direction from any height
 - Leg angle adjustment
 - Leg section adjustment
 - Column Reverse
- Height – Minimum is viewfinder at eye level, more is better
- Folded Length – Minimum for easy travel
- **Cost \$** - Match your budget



Additional Features

- Arca-Swiss style Ball Head, Clamp and Plates



Units = millimeters





Additional Features

- “L” plate for fast flip between landscape and portrait
- Customized to specific camera model



Plates for Nikon





Additional Features

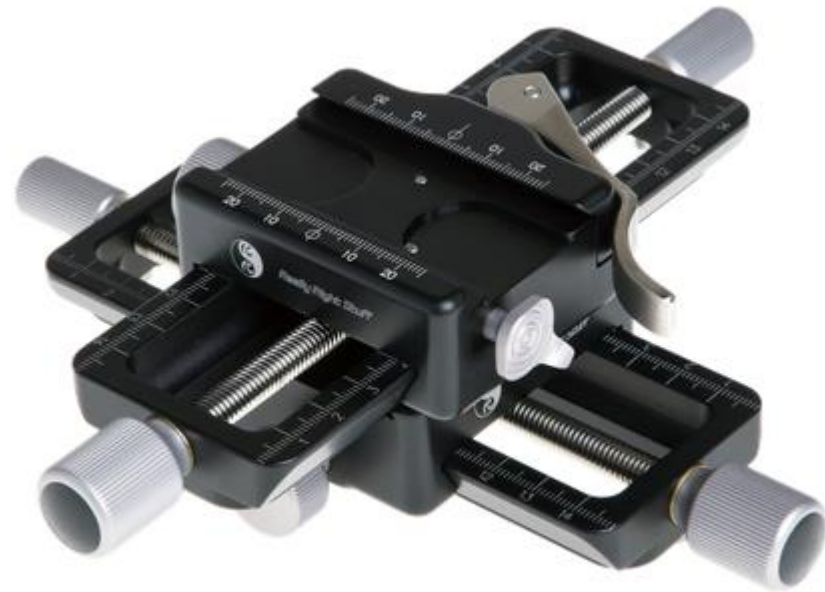
- Weight hook on center post
- Hang your backpack for stability





Additional Features

- Micro positioning rail for macro work





Additional Features

- Short Center post
- Leveling center mount
- Adjustable mount for panoramas

Leveling Bases





Additional Features

- Bubble level
- Panning Clamps

Panning Clamps





Additional Features

- Pano and Gimbal





Questions

- Many other features not discussed



References

- Benro <http://www.benrousa.com/>
- B & H <http://www.bhphotovideo.com/>
- Really Right Stuff <http://www.reallyrightstuff.com/>
- Many other suppliers not accessed for images